

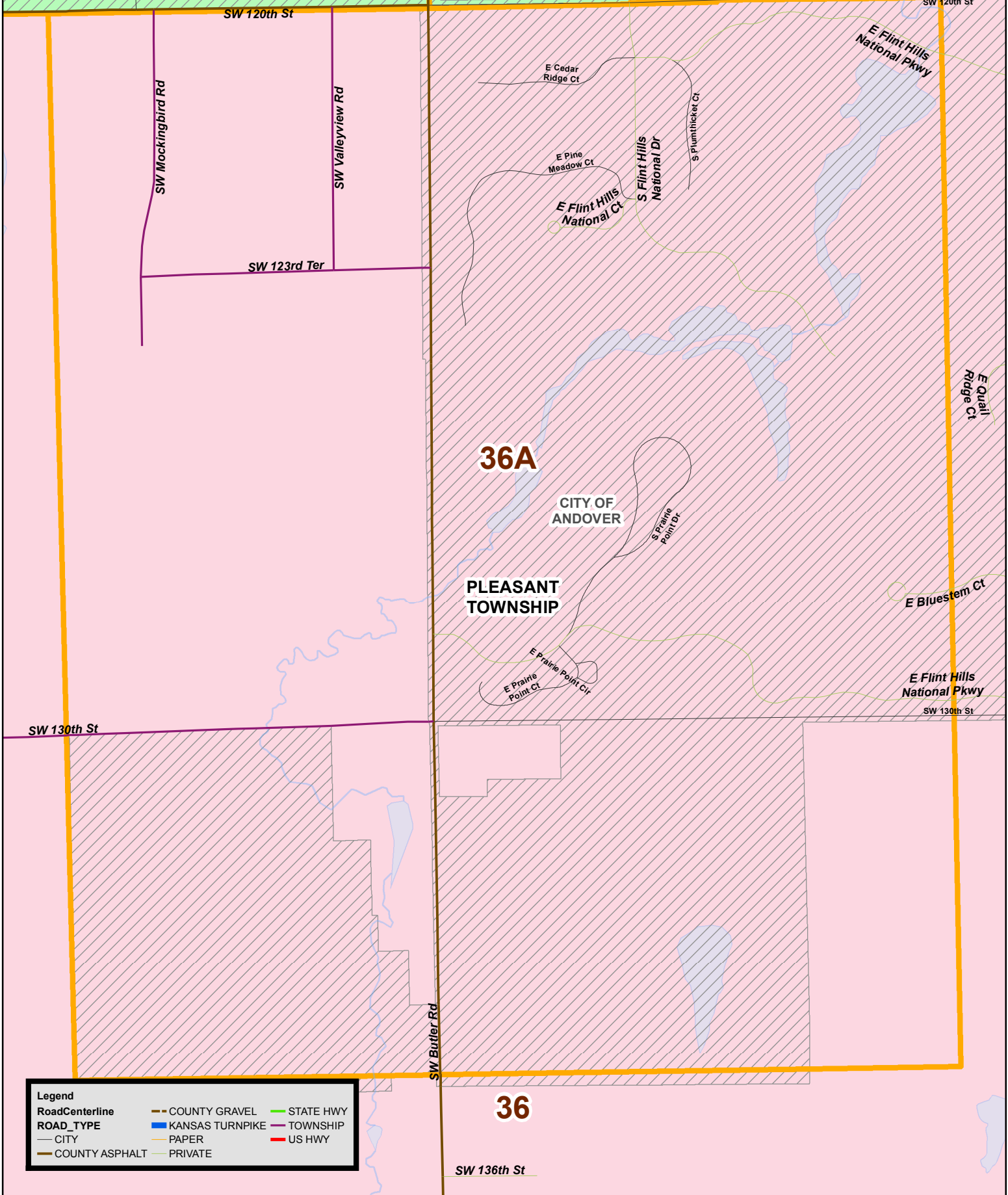


25H

BRUNO TOWNSHIP

25

Page No: 36A
Date: 9/17/2018



36A

CITY OF ANDOVER

PLEASANT TOWNSHIP

36

SW 136th St

Legend		
RoadCenterline	— COUNTY GRAVEL	— STATE HWY
ROAD_TYPE	— KANSAS TURNPIKE	— TOWNSHIP
— CITY	— PAPER	— US HWY
— COUNTY ASPHALT	— PRIVATE	