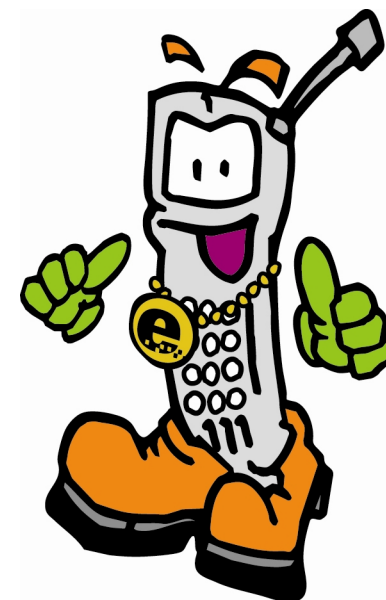
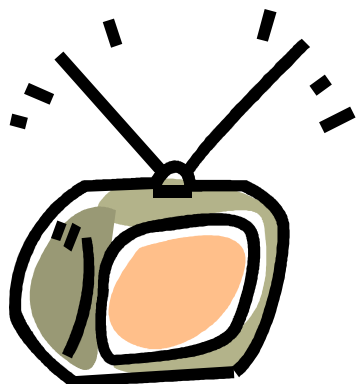


Don't Throw It Away!!

Butler County Electronic Waste
(E-Waste)
Collection Program



Beginning December 1, 2008



E-Waste Coordinator

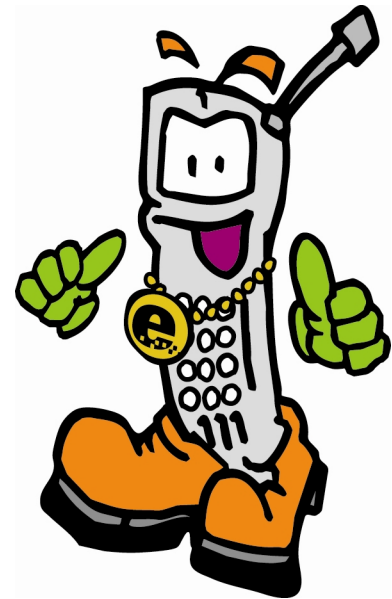
316-321-9278

www.bucoks.com



What is E-Waste?

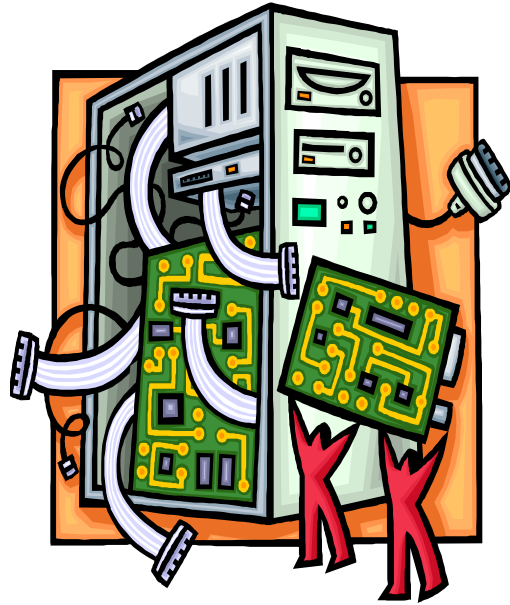
E-waste is produced when electronic products are no longer functional or become obsolete and need to be discarded.



Why Not Throw Unwanted E-waste in My Household Trash?



- By taking e-waste to a special collection point, materials such as gold, copper, silver, plastic and steel can be recovered and recycled.
- Hazardous materials such as lead and mercury are present in e-waste. It is best to keep those materials out of our landfill.
- By recycling e-waste, we are conserving our natural resources and energy as well as protecting air and water quality.



What About Personal Data Stored on Electronic Equipment?

Every collection center will follow strict guidelines to ensure safe and secure storage and handling to restrict third party access to confidential data stored on an electronic device.

Who Can Participate in the E-Waste Program?

- The program is FREE to Butler County
 - Households
 - Schools
 - Government Agencies
 - Businesses
 - Non Profit Groups



Where Can I Recycle My E-Waste?



Butler County Landfill

2963 SW 40th Street

Landfill Hours:

8:30 AM to 5:00 PM, Monday thru Saturday

Beginning December 1, 2008

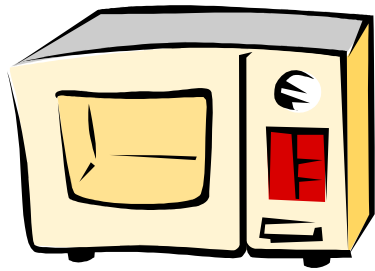
(Note: Call First if you are bringing large quantities of E-Waste!)
316-321-9278

Located at the Corner of SW Boyer Road and
SW 40th Street.

As you enter the landfill, follow the signs to the scale house.
Staff will assist you with directions and procedure.

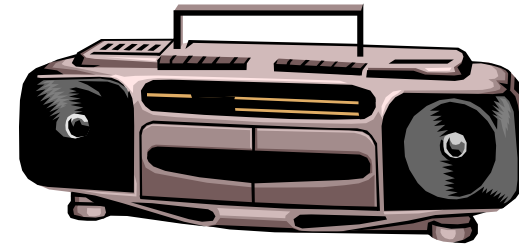
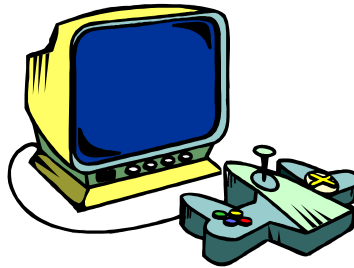


Materials Accepted:



Microwaves

Video Games



Radios

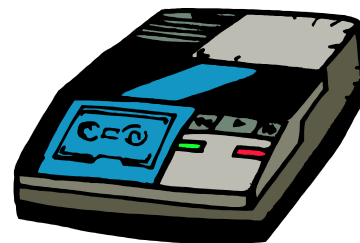


Copiers

Personal Data Assistant
(PDA's)



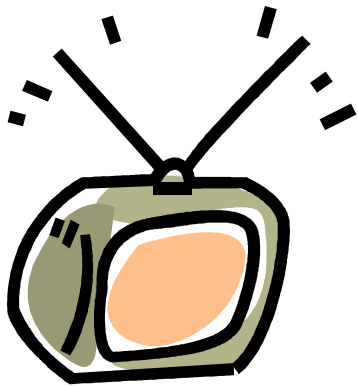
Answering
Machines



Pagers

Cell Phones





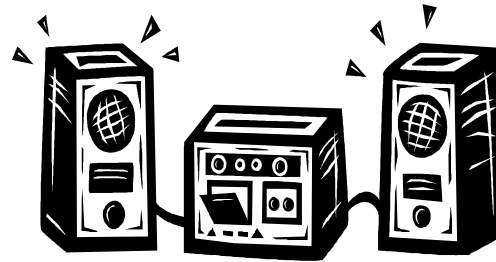
TV's



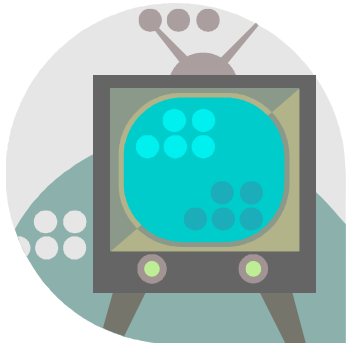
DVD Players



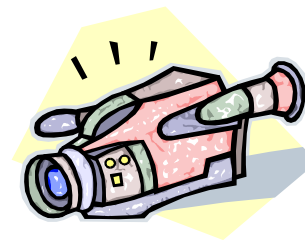
LCD TV's



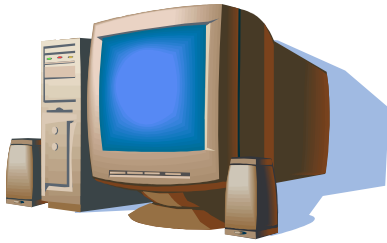
Stereos



CRT
TV's
(Tubes)



Camcorders



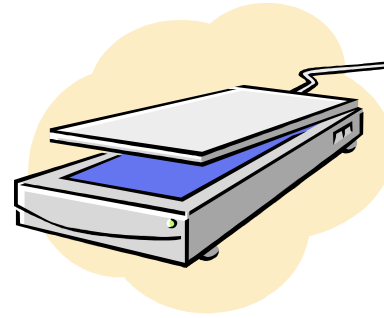
Whole Desktops



LCD & CRT
Monitors



Laptops



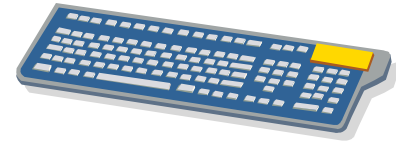
Scanners



CPU's



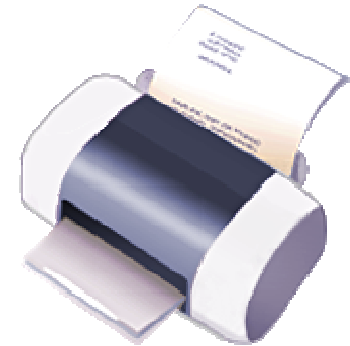
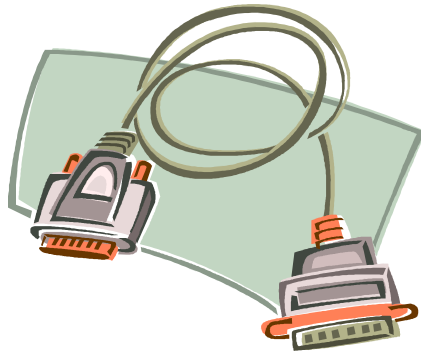
Fax Machines



Keyboards

Mice

Cords



Printers

For More Information

Contact the E-Waste Coordinator at
316-321-9278

Or see us at www.bucoks.com

Beginning December 1, 2008

*The E-Waste Program is funded in part by a
grant from the
Kansas Department of Health and Environment
and
Butler County Public Works.*